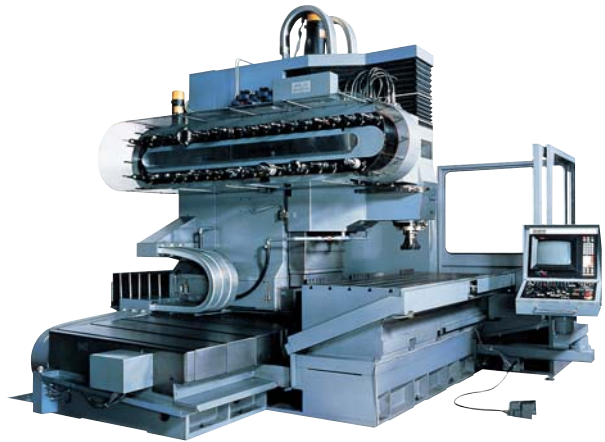


Chain tool pot for ATC (automatic tool changer system)

- This system was developed with the emphasis on high precision and durability for ATC chains used in the ATC equipment of machining centers.
- The tool pot was developed with special strengthened plastic as the main material, with consideration for the following points:
 1. Changing dimensions over time.
 2. Dimensional precision.
 3. Durability.
 4. Tool extraction force.



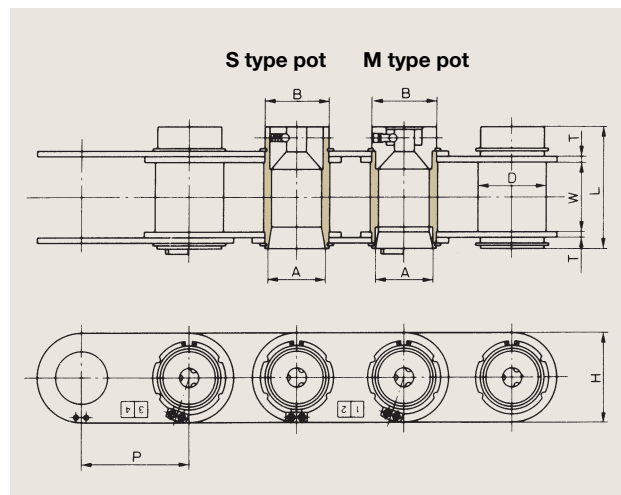
Types

HLP-S and, M (unit pot types)

In these types, tool pots are combined with hollow pins for reduced weight and size. There are two types, as described below.

Features

1. S type Single steel pots
The tool pots are combined with hollow pins, and the parts that come into contact with the tools are coated.
2. M type Modular pots
A special plastic insert is added to the front of the unit pot to improve wear resistance.



Chain No.	Pitch P (mm)	Dimensions (mm)						
		A	B	D	H	L	T	W
HLP90-40S M	90	44.45	55	60	82	89	4.0	60
HLP100-40S M	100							
HLP125-40S M	125							
HLP115-50S M	115	69.85	78	82	108	148	6.3	83
HLP130-50S M	130							
HLP140-50S M	140							
HLP160-50S M	160							

Note: 1. We can also manufacture to special dimensions.
2. Modular pot Pat. Pending.

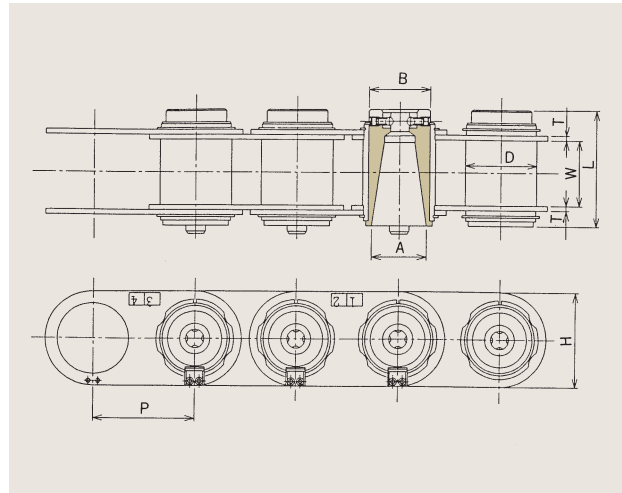
Chains and tool pots for ATC (Automatic Tool Changer) systems

HLP-F type (plastic pot type)

Plastic tool pots are built into the hollow pins of the chain.

Features

1. Tool pots are easy to change.
2. Tool pots are made from special plastic for adequate durability.



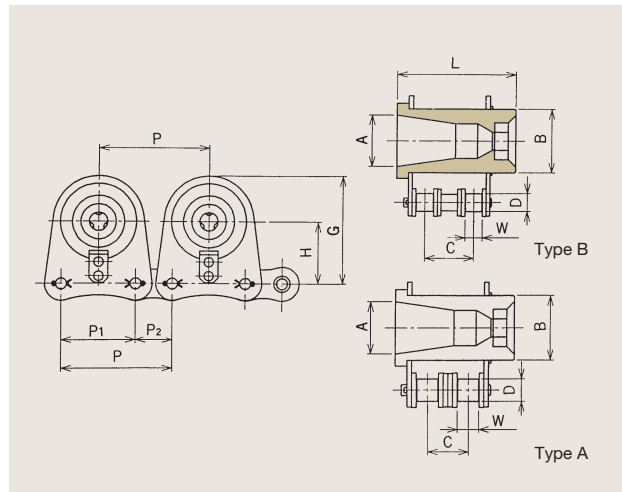
Chain No.	Pitch P (mm)	Dimensions (mm)						
		A	B	D	H	L	T	W
HLP90-40F	90	44.45	55	68	88	105	4.0	60
HLP100-40F	100							
HLP125-40F	120							
HLP130-50F	130	69.85	78	92	120	146	6.3	83
HLP140-50F	140					144		
HLP160-50F	160							

SAK-F type (plastic pot type)

Similar to the structure of the SAW type, with tool pots built into unitary chains.

Features

1. Light and economical, offering stability and rigidity.
2. Easy to position the tools.



Chain No.	Pitch (mm)			Dimensions (mm)							
	P	P ₁	P ₂	A	B	C	D	G	H	L	W
SAK100-40F	95.25	63.5	31.75	44.45	55	53.18	19.05	92.0	53.0	102	19.05
SAK120-50F	114.30	76.2	38.10	69.85	78	77.10	22.23	115.3	68.3	148	25.40
SAK140-50F	133.35	88.9	44.45	69.85	78	73.60	25.4	136.0	80.0	148	25.40

Chains for Special Applications

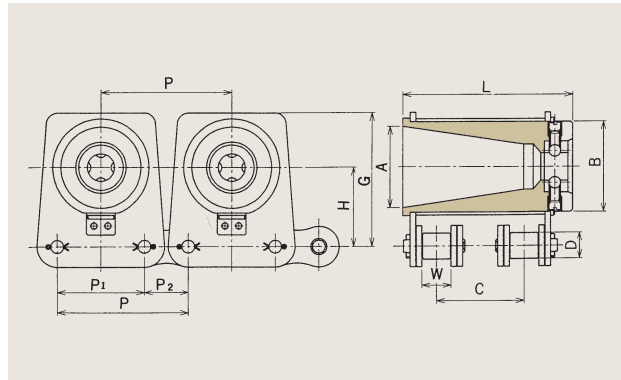
Chains and tool pots for ATC (Automatic Tool Changer) systems

SAW-F type (plastic pots)

Plastic tool pots are built into a chain that splits between left and right sides.

Features

1. Lightweight and economical.
2. Easy to position the tools.



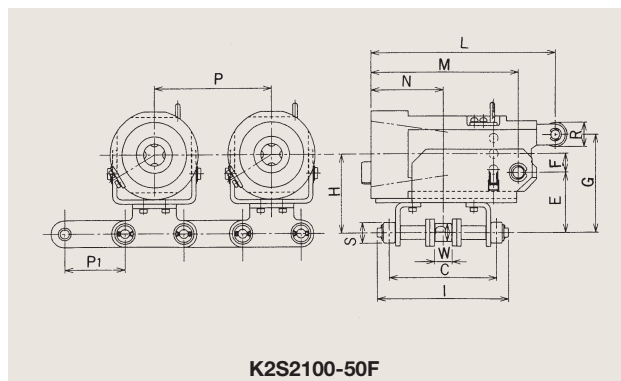
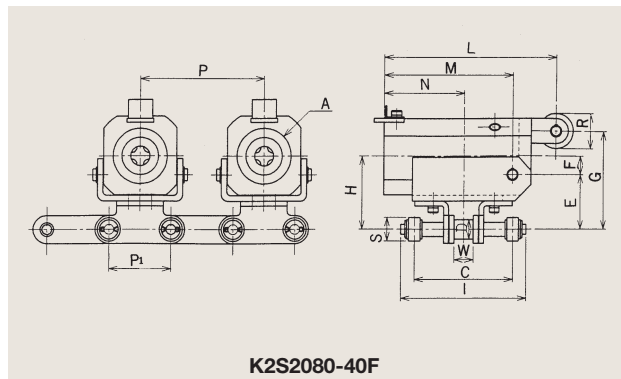
Chain No.	Pitch (mm)			Dimensions (mm)							
	P	P ₁	P ₂	A	B	C	D	G	H	L	W
SAW120-50F	114.30	76.2	38.10	69.85	78	52.6	22.23	115.3	68.3	155	25.4
SAW120-50F	114.30	76.2	38.10	69.85	78	77.1	22.23	136.0	80.0	148	25.4
SAW140-50F	133.35	88.9	44.45	69.85	78	73.6	25.40	136.0	80.0	148	25.4

K2S-F type (plastic pot type)

This type has a chain attachment with a tool pot tipping function, so that it can be used in upright machining centers.

Features

1. The tool changing system can be simplified.
2. The chain has side rollers, so the tools are prevented from tilting or swaying.



Chain No.	Pitch (mm)		Dimensions (mm)													
	P	P ₁	A	C	D	E	F	G	H	I	L	M	N	R	S	W
K2S2080-40F	101.6	50.8	44.45	70	15.88	43.5	15	78.5	58.5	92.6	140	105	60.00	28	19.05	15.88
K2S2100-50F	127.0	63.5	69.85	117	19.05	70.0	20	120.0	90.0	143.0	200	150	91.25	28	22.22	19.40