

# Standard Conveyor Chains

## Attachment types

### Standard attachments

Conveyor chains must be used with various attachments to suit their applications. We offer A-type, K-type and G-type standard attachments.

#### A-type

Fins with bolt holes are attached to one side of the chain. Named A-1 or A-2, according to the number of bolt holes.



#### K-type

Fins with bolt holes are attached to both sides of the chain. Named K-1 or K-2, according to the number of bolt holes.

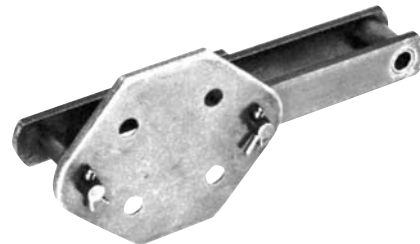


#### G-type

Link plates on one side of the chain have bolt holes. Named G-2 or G-4, according to the number of bolt holes.



G-2

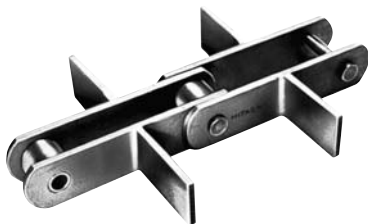


G-4

### Special attachments

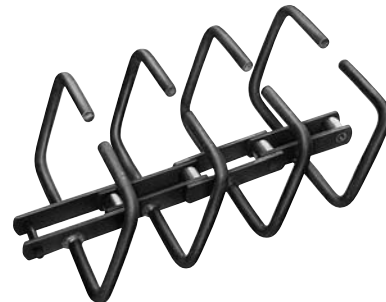
#### T-type, for case conveyors

Used to convey objects in cases, mainly horizontally.



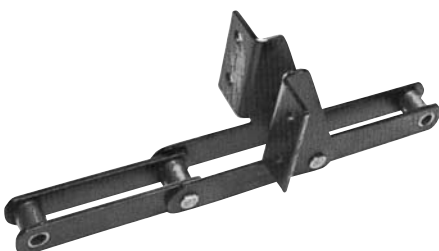
#### U-type, for case conveyors

Used to convey objects in cases at an incline or vertically.



#### SF4-type, for water treatment

Used to attach flights for agitating sludge.



#### T-1-type, for water treatment

Used to attach rakes for collecting garbage.



**Special attachments**

We manufacture special attachments such as those below, to suit load conveying requirements.

