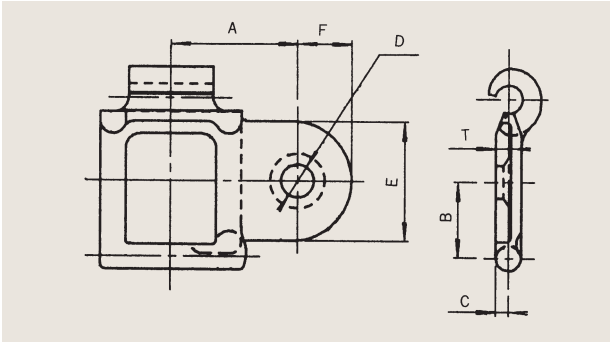


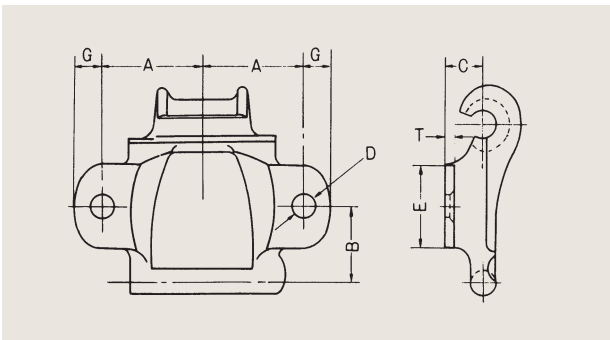
A-1 attachments



Chain No.	Dimensions (mm)							Mass (kg)	
	A	B	C	D	E	F	T	1 length	1 m
25	22.2	11.1	2.4	5.6	18.3	8.7	2.4	1.84	0.61
32	22.2	15.9	2.4	5.6	18.3	8.7	3.2	2.36	0.79
42	27.8	16.7	2.8	7.2	26.2	11.9	3.6	3.63	1.21
52	30.2	19.8	3.2	6.8	27.0	11.1	3.2	5.08	1.69

Note: We have right-handed and left-handed versions.

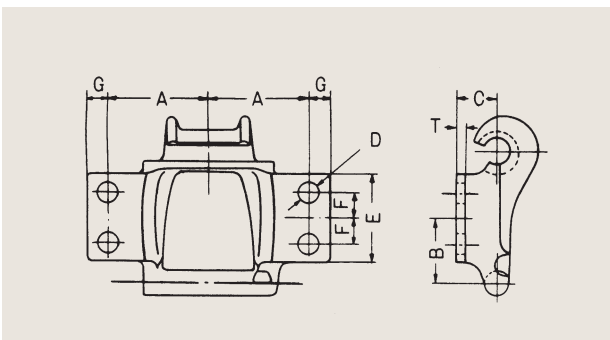
K-1 attachments



Chain No.	Dimensions (mm)							Mass (kg)	
	A	B	C	D※	E	F	T	1 length	1 m
25	15.9	12.7	8.7	4.0	11.1	5.6	2.4	2.15	0.72
32	22.2	15.1	9.5	5.6	15.1	7.1	2.4	3.42	1.14
42	25.4	17.5	9.5	5.6	19.1	8.7	3.2	4.50	1.50
45	25.4	19.8	10.3	5.6	21.4	8.7	3.2	4.31	1.44
52	30.2	18.3	11.1	5.6	22.2	11.1	3.2	6.40	2.13
55	25.4	19.8	10.3	7.0	22.2	8.7	3.2	4.80	1.60
62	30.2	21.4	11.9	7.1	23.8	11.9	4.0	7.65	2.55
77	38.1	28.6	16.7	7.1	32.5	11.1	4.0	11.40	3.80
88	48.4	31.8	19.1	8.7	34.9	11.1	4.8	16.40	5.47
103	53.2	38.1	22.2	10.3	43.7	12.7	6.4	25.35	8.45
114	61.1	41.3	22.2	13.5	44.5	19.1	7.9	35.45	11.82

※25-62 have round holes.
77-114 have angular holes.

K-2 attachments



Chain No.	Dimensions (mm)							Mass (kg)		
	A	B	C	D	E	F	G	T	1 length	1 m
88	50.8	32.5	20.6	10.3	44.5	12.7	11.1	4.8	17.48	5.83